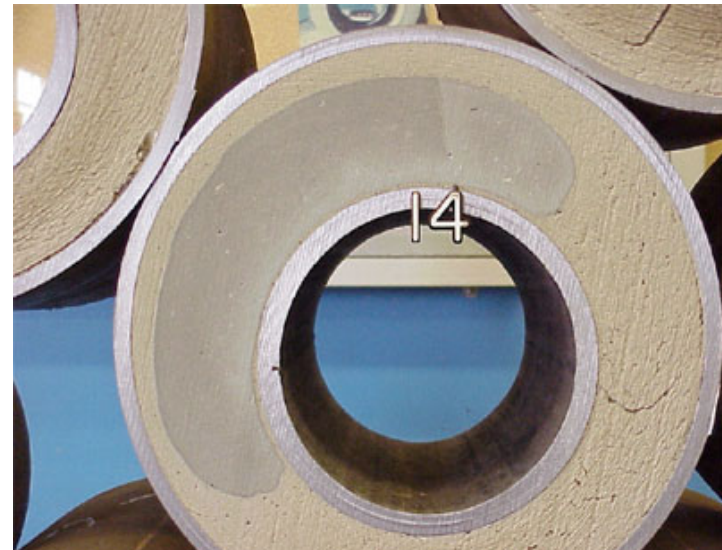


ChannelSeal



A Halliburton product designed to enable cement to be placed into low clearance annuli and is placed in the well prior to running casing. The product was initially designed for use in conjunction with expandable casing strings.

“The SSF will set to a state for providing zonal isolation if it is bypassed during the cement displacement process. Depending on the time required to run and expand the casing, the SSF can be formulated to remain liquid for a few hours or as long as three weeks. However, the high pH condition and heat of hydration from the placed cement in the annulus can accelerate the set of the SSF to a few hours. The achievement of a near-100% annular seal occurs even when poor cementing conditions are present and without the use of rheologically tuned spacers.”

From SPE 77751- Use of Settable Spotting Fluid Improves Expandable Casing Process—Case History